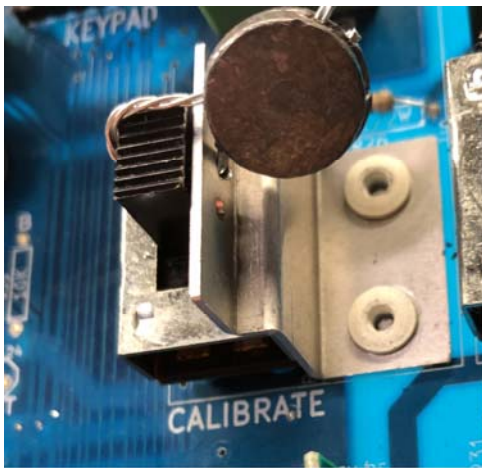


Dispenser Electronic Calibration

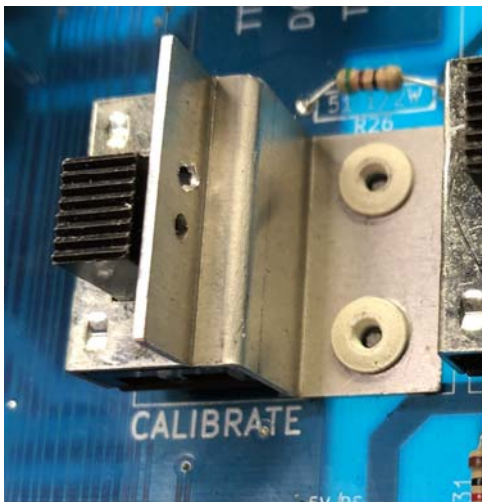
Fine calibration of the meter accuracy can be achieved by using CALIBRATION feature of the CTG105 controller board.

PROCEDURE:

1. Dispenser Operating Mode has to be in ConSoL = 0. Refer to the DeepBlu10 Programming Instructions on how to select ConSoL = 0 (local) versus ConSoL = 1 (remote) Authorization of the Controller
2. Fill a 5 gallon approved test can and verify that accuracy of dispensed volume is within +/- 9.0 cubic inches
3. Locate the CALBRATION switch on the CTG105 controller



4. Remove any lead seal and slide switch to the CALIBRATE position

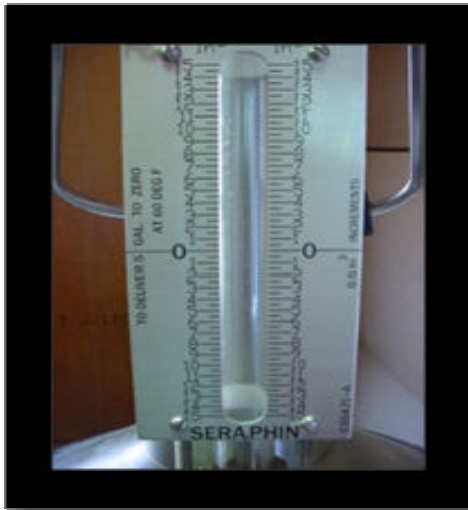


5. When switched to CALIBRATE, the display will indicate FILL CAN



6. Remove nozzle from nozzle dock. Display will reset and allow dispensing.

7. Fill test can to close to zero on the sight glass.

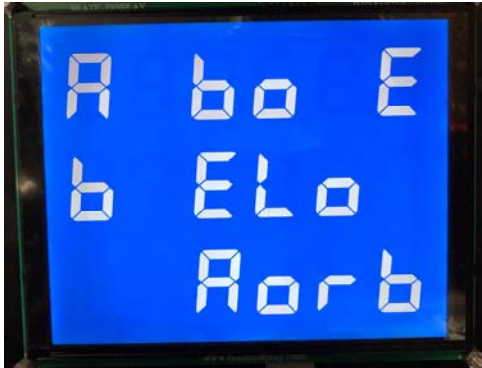


8. Return the nozzle to the dock.

9. Press the # (Enter) key on the Keypad



10. The display will change to:



11. Allow enough time for the liquid to settle and read the inches above or below the zero on the sight glass. If the reading is above the zero, press A. If below, press B.

12. The display now changes to allow entry of the number of inches above or below. Value is entered in tenths of an inch without the decimal. Enter the 2 digits and press Enter (# key)



13. After pressing # key in above step the display changes to:



14. Return the CALIBRATION switch to the normal position and seal firmly in position with wire and lead seal.

