

DEF EQUIPMENT CATALOG



PROVEN | RELIABLE | INNOVATIVE

Headquartered in Greenville, SC, Blue1 Energy Equipment® is a fully integrated provider of storage and dispensing equipment for fleets of all sizes and vocations. Our broad assortment of fueling solutions includes petroleum and DEF (Diesel Exhaust Fluid) equipment, propane autogas systems and EV charging solutions.

Our DEF division is one of the nation's leading manufacturers of proven, reliable storage and dispensing equipment. Our sister company (formerly EZ Fuel), provides aboveground petroleum equipment for both diesel and gasoline vehicles. And, since partnering with leaders in both the electric vehicle charging and propane autogas industries, we now provide equipment and turn-key installation services for fleets turning to clean energy solutions as well.

We are proud to have some of the best and most recognizable fleets as customers. With our products installed at thousands of locations across North America, contact us today to find out how we can help you.



Blue1 Energy was recently presented with the DEF Industry Equipment Innovation Award at the 2019 Integer Conference held in Scottsdale, AZ.

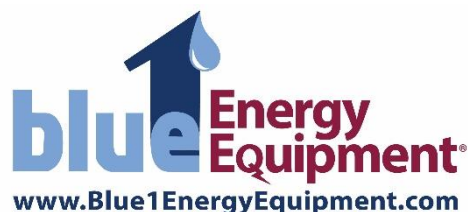


TABLE OF CONTENTS

COMMERCIAL SOLUTIONS

6	COMMERCIAL PLATINUM
7	COMMERCIAL CUBE
8	COMMERCIAL CUBE – 1320G
9	SOUTHERN EASYTANK
10	NORTHERN EASYTANK
11	TOTE CABINET
12	BLUE1ECON SYSTEM
13	ECONOMY CABINET

RETAIL SOLUTIONS

15	RETAIL PLATINUM
16	blueCHIP RETAIL DISPENSER
17	REMOTE PLATINUM
18	3 rd PARTY DISPENSER

DISPENSE SOLUTIONS

20	DEF DISPENSER
21	DISPENSE PEDESTAL

TRANSFER SOLUTIONS

23	TRANSFER CART
24	TRANSFER SKID

MOBILE SOLUTIONS

26	DRUM CART
27	TPDU-P
28	TPDU-M
29	TPDU-M HEATED

PUMP SOLUTIONS

31	TD1
32	TD12V
33	TD10
34	TD10-12V
35	TC1
36	TM1
37	TED1

VALVES & COUPLERS

39	VALVES & COUPLERS
40	TOTE MANIFOLD
42	PARTS & ACCESSORIES



COMMERCIAL SOLUTIONS



COMMERCIAL PLATINUM



Features & Components Included:

- Pre-wired electrical components certified to UL-508A & CSA C22.2 standards
- Submersible DEF pump (1/2 HP)
- Built-in dispenser w/20' hose reel assembly
- Pulse output included; Card reader compatible
- SS Swivel breakaway & auto shut off nozzle
- Inventory level display with audible overflow alarm
- HDPE primary tank with vented manway
- All models include 110% Secondary Containment
- Insulated FRP panels
- Aesthetically pleasing, smooth, glossy white exterior finish
- Conforms to ISO 22241-3,4 standards
- Hinged roof w/pneumatic lifts (Except 3400G and greater)
- Stainless steel piping
- 2" Fill-port dry break adapter
- Leak-proof press fittings & BSPP connections
- Audible overflow alarm
- Forklift compatible base frame

<u>Capacity</u>	<u>Weight (LBS)</u>	<u>Dimensions (WxDxH)</u>
500 Gal	1500	44x107x89 inches
750 Gal	1700	44x125x99 inches
1000 Gal	2000	48x132x110 inches
2000 Gal	3000	73x197x94 inches
3400 Gal	3900	93x192x107 inches
5000 Gal	5200	100x227x116 inches
6000 Gal	6200	110x231x126 inches



Features & Components Included

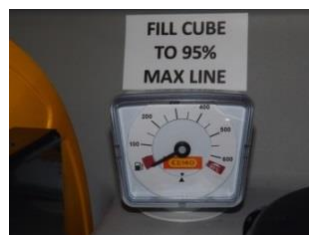
- Robust Double Wall Containment
- Outer Tank Holds 110% of Inner Tank Volume
- 6 GPM 120V Pump
- 25 ft Hose Reel including ¾" DEF Hose
- General Construction Inspection Approval Z-40321-510
- Hinged, Lockable Lid
- Integral Sump
- Electronic Overfill Sensor
- Audible Overfill Alarm
- 2" Dry Break Fill Port
- Liquid Level Gauge
- Auto Nozzle and Nozzle Holder
- Fully Assembled and Pre-Wired
- Pulse Meter allows user to connect to most card reader systems. (Optional)
- Extreme Cube includes a 500W internal probe heater to prevent DEF from freezing.



Internal Probe Heater



Pulse Meter Option



Liquid Level Gauge



Audible Overfill Alarm

<u>Capacity</u>	<u>Weight (LBS)</u>	<u>Dimensions (WxDxH)</u>
396 Gal	451	47x45x71 inches
660 Gal	584	47x71x71 inches



Island Ready Footprint

CUBE – 1320g



Features & Components Included:

- Robust Double Wall Containment
- Outer Tank Holds 110% of Inner Tank Volume
- 6 GPM 120V Pump
- General Construction Inspection Approval Z-40.21-565
- Hinged, Lockable Lid
- Integral Sump
- Electronic Overfill Sensor
- Optical Bund Alarm
- 2" Dry-Break Fill Port
- Liquid Level Gauge
- Auto Nozzle and Nozzle Holder
- Fully Assembled and Pre-Wired
- Optional Pulse Meter allows user to connect to most card reader systems.
- Dimensions (WxDxH): 95x91x71 inches
- Empty Weight = 800 lbs
- Electrical Requirements: (1) 120v, 30 amp



SOUTHERN EASYTANK



Standard Tank Features:

- Fill & Dispense Bulkheads
- Fittings Package (2) QD Valves
- 500 – 20,000 Gallons Available

Optional Tank Features:

- 25 ft or 50 ft Hose Reel added to Pedestal
- Pulse Meter Assembly for Fuel Management System
- 2" Bulkhead for Tank Monitoring System

Remote Dispense Pedestal Features:

- 15"W x 15"D x 54"H (Pedestal w/out reel)
- 26 1/4 "W x 15"D x 54"H (Pedestal w/reel)
- TD10-115V Diaphragm Pump
- Turbine Flow Meter
- 20'/6' Dispense/Suction Hoses

NORTHERN EASYTANK



Standard Tank Features:

- 2" Layer Closed Cell Foam Insulation
- Polyester Reinforced Tank Wrap
- Fill & Dispense Bulkheads
- Fittings Package (2) QD Valves
- 500 – 20,000 Gallons Available

Optional Tank Features:

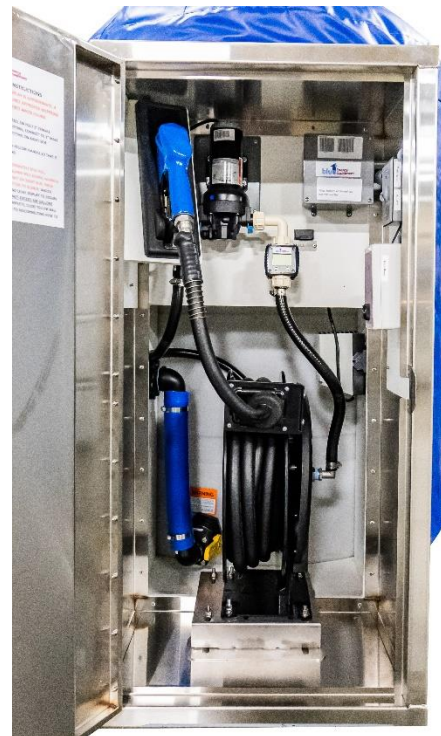
- Immersion Heater for Extreme Temps

Mounted Dispense Cabinet Features:

- 24"W x 48"H x 27"D
- TD10-115V Diaphragm Pump
- Turbine Flow Meter
- 25' Hose Reel
- 400W Heater with Auto Thermostat
- Liquid Level Indicator

Optional Cabinet Features:

- 50 ft Hose Reel
- Pulse Meter for Fuel Management System



TOTE CABINET



Features & Components Included:

- Pre-wired electrical components certified to UL-508A & CSA C22.2 standards
- Pre-wired light, on/off switch & GCFI outlet require 110V, 30 amp service
- Weatherproof, insulated housing, door & roof
- Aesthetically pleasing, smooth, glossy white exterior finish
- Fold down access door for convenient fueling of either lane
- Lockable, heavy-duty door handles (on fold down and double doors)
- Optional built-in dispenser
- Forklift compatible frame, anchoring package included

<u>Capacity</u>	<u>Weight (LBS)</u>	<u>Dimensions (WxDxH)</u>
Single	1300	48x96x87 inches
Double	1900	48x144x89 inches

BLUE1ECON SYSTEM



Features & Components Included:

- UL Certified, pre-wired electrical components
- Conforms to ISO 22241-3,4 standards
- Proprietary single wall HDPE tank is UV protected
- Dispense assembly includes 15' hose, auto shutoff nozzle & SS swivel breakaway
- LED dispense display with 100:1 pulse output for integration with all major card readers
- Stainless Steel piping with leak proof press fittings & 2" dry-break fill coupler
- ½ HP submersible pump
- Pressure vacuum vent
- Forklift compatible, steel bolt-down frame protects system from strong winds & storms

<u>Capacity</u>	<u>Weight (LBS)</u>	<u>Dimensions (WxDxH)</u>
500 Gal	2000	39x93x77 inches
750 Gal	2200	39x101x91 inches
1000 Gal	2500	44x111x95 inches

ECONOMY CABINET



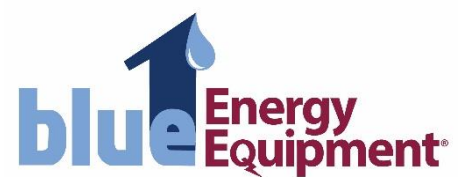
Features & Components Included:

- 100% Molded Polyethylene Construction
- Yellow exterior will not rust or corrode
- Lockable, roll up hood on all cabinets
- Lightweight, durable & weatherproof
- Forklift compatible
- Single tote cabinet: 65x62x96, 525 lbs
- Containment capacity: 365 gallons
- Tote not included





RETAIL SOLUTIONS



RETAIL PLATINUM



Features & Components Included:

- Pre-wired electrical components certified to UL-508 & CSA C22.2 standards
- Submersible DEF pump
- NTEP Certified Dispenser
- EMV Certified Payment Terminal with Printer
- Point of Sale Interface
- Inventory level display with audible overfill alarm
- HDPE primary tank with vented manway
- All models include 110% Secondary Containment
- Insulated FRP panels
- Aesthetically pleasing, smooth, glossy white exterior finish
- Conforms to ISO 22241-3,4 standards
- 2" Fill-port dry break adapter
- Lockable Service Door
- Leak-proof press fittings & BSPP connections

<u>Capacity</u>	<u>Weight (LBS)</u>	<u>Dimensions (WxDxH)</u>
500 Gal	1500	44x107x89 inches
750 Gal	1700	44x125x99 inches
1000 Gal	2000	48x132x110 inches
2000 Gal	3000	73x197x94 inches
3400 Gal	3900	93x192x107 inches
5000 Gal	5200	100x227x116 inches
6000 Gal	6200	110x231x126 inches

blueCHIP RETAIL DISPENSER



Features & Components Included:

- Blue1 Energy NTEP Certified
- Conforms to ISO 22241 Standards
- EMV Payment Terminal with Printer
- Heavy-Duty Steel Construction
- Integrated Nozzle Holster w/Auto Nozzle
- High Hose Hanger
- Integration with Site Controllers & POS Systems
- Lockable Service Door
- Dimensions: 25"W x 25"D x 95" T

Options:

- Closed Cell Foam Insulation
- Thermostatically Controlled Heater
- Thermostatically Controlled Heated Hose
- Single or Dual Dispense Configurations

REMOTE PLATINUM



Features & Components Included:

- Pre-wired electrical components certified to UL-508A & CSA C22.2 standards
- Submersible DEF pump (1 HP)
- Dispenser not included
- Compatible w/all retail and commercial dispensers
- Inventory level display with audible overfill alarm
- HDPE primary tank with vented manway
- All models include 110% Secondary Containment
- Insulated FRP panels
- Aesthetically pleasing, smooth, glossy white exterior finish
- Conforms to ISO 22241-3,4 standards
- Hinged roof w/pneumatic lifts (Except 3400G and greater)
- Stainless steel piping
- 2" Fill-port dry break adapter
- Leak-proof press fittings & BSPP connections
- Forklift compatible base frame

<u>Capacity</u>	<u>Weight (LBS)</u>	<u>Dimensions (WxDxH)</u>
500 Gal	1400	44x107x89 inches
750 Gal	1600	44x125x99 inches
1000 Gal	1900	48x132x110 inches
2000 Gal	2900	73x197x94 inches
3400 Gal	3800	93x192x107 inches
4000 Gal	4800	100x227x97 inches
5000 Gal	5100	100x227x116 inches
6000 Gal	6100	110x231x126 inches

3RD PARTY DISPENSER



Features & Components Included:

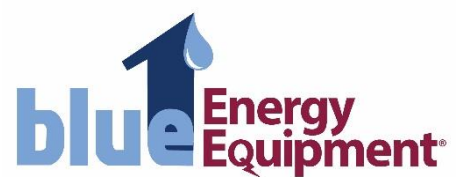
- Pre-wired electrical components certified to UL-508A & CSA C22.2 standards
- Submersible DEF pump (1/2 HP)
- 3rd Party *Customer Supplied* Warm Weather Dispenser, Factory Integrated
- Built-in SS dispenser interface w/20' hose reel assembly
- SS Swivel breakaway & auto shut off nozzle
- Inventory level display
- HDPE primary tank with manway
- Insulated FRP panels
- Aesthetically pleasing, smooth, glossy white exterior finish
- Conforms to ISO 22241-3,4 standards
- Fixed, removable roof
- Stainless steel piping
- 2" Fill-port dry break adapter
- Leak-proof press fittings & BSPP connections
- Forklift compatible base frame

<u>Capacity</u>	<u>Weight (LBS)</u>	<u>Dimensions (WxDxH)</u>
500 Gal	2000	44x132x89 inches
750 Gal	2200	46x140x99 inches
1000 Gal	2500	46x150x110 inches

Dimensions may vary based on model of integrated dispenser.



DISPENSE SOLUTIONS



DEF DISPENSER



Features & Components Included:

- Pre-wired electrical components certified to UL-508A & CSA C22.2 standards
- Insulated fiberglass & composite material enclosure (22x32x70)
- Includes stainless steel dispenser w/20' hose reel, swivel breakaway and auto shutoff nozzle
- Pulse output for integration with card readers
- Stainless steel solenoid valve
- 1" SS Ball valve for piping connection
- Anchor package included
- 1 micron polyethylene filter
- Dual hose dispenser includes two each: nozzle, swivel breakaway, filter, solenoid & 20' hose reel assembly

DISPENSE PEDESTAL



Features & Components Included:

- 15"W x 15"D x 54"H (Pedestal w/out reel)
- 26 1/4 "W x 15"D x 54"H (Pedestal w/reel)
- TD10-115V Diaphragm Pump
- Turbine Flow Meter
- 20' Dispense Hose / 6' Suction Hose
- Auto Shut Off Nozzle

Optional Features:

- 25 ft Hose Reel
- Pulse Meter Assembly for use with Fuel Management Systems





TRANSFER SOLUTIONS

TRANSFER CART



Customized solutions available!

The Transfer Cart is the ideal solution for distributors needing an affordable and portable system for the bulk transfer of DEF. Blue1's TC10 flooded suction pump offers an open flow rate of 35+ GPM with no priming and minimal maintenance. Weights and Measures approved meter and register, air eliminator, and dual filters ensure DEF is delivered quickly, accurately, and contamination free. With a variety of nozzle and fitting packages available, the transfer cart can be customized to fit any bulk transfer application.

Features & Components Included

- Blue1 TC10 Centrifugal Pump – Flooded Suction/Self Priming, Electric Start, 3/4 HP, 115V 10A, Continuous Duty, 35+ GPM Open Flow Rate
- 10' 1 1/4" Suction Hose, 20' 1" Dispense Hose
- 20' Power Cord With On/Off Switch
- Weights and Measures Approved Meter & Register With Ticket Printer
- Industrial Strength Powder Coated Carbon Steel Cart With Heavy Duty Solid Rubber Tires
- Can Be Outfitted With Blue1 High Flow Couplers, Quick Disconnect or Dry-Break Fittings. Drumming Nozzles Also Available.
- Approx. Dimensions: 37" W (Including Hose Hangers) x 27" L x 52"H

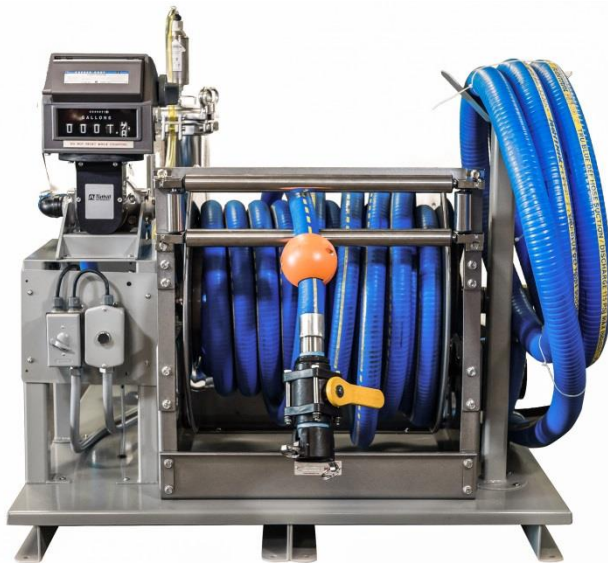
TRANSFER SKID



The Transfer Skid is an overbuilt solution for users needing higher flow rates and transferring larger quantities. With a variety of pumps and power sources available, we can tailor the skid to meet each unique application's needs.

Features & Components Included

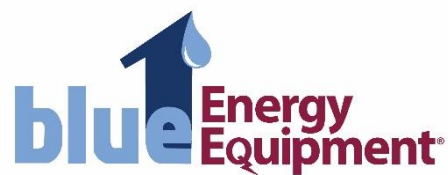
- 1-3 HP Pumps Available. Gas Powered or Electric
- Weights and Measures Approved Meter and Register With Ticket Printer
- Air Eliminator With Filtration System
- Hose Reel With Integrated Roller Guides. Variety of Sizes and Lengths Available
- Quick Disconnect or Dry-Break Fittings. Drumming Nozzle Available.
- 4' x 4' Approximate Footprint



Customized solutions available!



MOBILE SOLUTIONS



DRUM CART



Features & Components Included

- Works with TD1 or TD12V Pumps
- Fits 55 Gallon Drum (not included)
- Accommodates 10 or 20 ft. Dispense Hose
- Closed, Secure System with Blue1 High Flow Valve and Coupler
- 16 Gauge Steel, Powder Coated Body
- Lockable Front Wheel
- Durable, Heavy Duty
- Battery Mount Option Available

(Drum not included.)

The Blue1 DEF drum cart is designed for extended service life and easy use in a variety of operational environments. Our DEF drum carts feature a Blue1 diaphragm style DEF pump and up to 20 ft. of DEF hose. This is a complete, closed system that allows the end user to safely move a 55 gallon drum to the point of dispense.

You may also need:

4 Pin Valve Install Tool

Tamper Evident Wire Seal

Replacement Back Wheel

Replacement Back Axle

Replacement Front Wheel

Options



10 or 20 ft. hose



Flow Meter



Battery Mount
(battery not included)



Drum Cart
Available without
Pump



Features & Components Included

- TD10-12V Diaphragm Pump
- 20 ft. Dispense Hose
- Rugged All-Poly Housing
- Molded Recesses for Tie Downs During Transport
- Integrated Nozzle Holder Auto Shut Off Nozzle w/ Swivel
- Forklift Recesses
- Integrated Carry Handles
- Lockable Lid for Complete Security

The Blue1 TPDU-P features the same convenience, portability, and durability of the TPDU-M, but in a slightly lighter weight package. Made from ISO 22241 compliant rotationally molded high density polyethylene (HDPE,) the TPDU-P is UV and rust resistant for years of service in the harshest of conditions. The TPDU-P is equipped with our TD10-12V diaphragm pump.

<u>PDU Capacity</u>	<u>Weight (LBS)</u>	<u>Dimensions (LxDxH)</u>
33 Gallons	60	32x24x18 in
53 Gallons	62	32x24x23 in
113 Gallons	130	46x30x29 in
158 Gallons	156	46x32x40 in





Features & Components Included

- TD12V Self-Priming Diaphragm Pump
- 20 ft. Dispense Hose
- 4 ft. Suction Hose
- Auto Shut Off Nozzle w/ Swivel
- Blue1 High Flow Valve
- Blue1 High Flow Dispense Coupler
- DEF Port will only accept DEF Nozzle
- Forklift Accessible for Easy Transport
- Lockable Lid for Complete Security
- Front View Strip for Fluid Level Visibility

The Blue1 Portable Dispensing Unit (TPDU-M) is a DEF compliant, enclosed, secure mobile dispensing system. Our PE tank is ISO 22241 compliant for use with DEF. The TPDU-M comes with an easy to lift, hinged lid that keeps equipment and DEF free from dust and debris and the locking arm keeps the lid open when in use. The TPDU-M has a tamper proof locking system for total security. This unique dispensing system is housed in heavy duty powder coated carbon steel with a rust resistant finish. The outside view strip allows operator to monitor DEF levels.

<u>PDU Capacity</u>	<u>Weight (LBS)</u>	<u>Dimensions (LxDxH)</u>	<u>Heated</u>
20 Gallons	131	30x18x22 in	No
60 Gallons	200	45x24x30 in	No
100 Gallons	261	48x30x34 in	No



TPDU-M HEATED



Standard 110V Power Receptacle



Temperature probe installed. Temperature control activated at 30°F

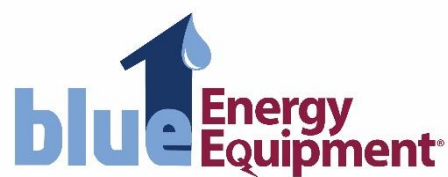
The Blue1 heated PDU is insulated and fitted with a 120 vac 475 watt heating system that is designed to prevent the DEF from freezing in minimum ambient conditions down to -40°F (-40°C).

The heating system consists of two low watt density, low profile, waterproof, pressure laminated heater pads. One heater pad is attached directly to the exterior of the polyethylene DEF Tank and the second heater pad is attached directly to the underside of the PDU Equipment Tray. The heaters are connected to an Electronic Temperature Controller that is also located on the underside of the PDU Tray. This Temperature Controller will automatically energize and de-energize both heaters based upon the ambient air temperature being monitored and measured inside of the PDU Enclosure. The entire heating system becomes functional when a 120vac power supply is plugged into the Power Receptacle on the side of the PDU enclosure. A 20 foot industrial grade extension cord is included with the system. The heating system will automatically switch on and remain switched on when the Temperature Controller is registering an ambient air temperature below 30°F (-1.1°C) inside of the PDU Enclosure. The heating system will automatically switch off and remain switched off during all time periods when the Temperature Controller is registering ambient air temperatures above 30°F (-1.1°F) inside the PDU Enclosure.

<u>PDU Capacity</u>	<u>Weight (LBS)</u>	<u>Dimensions (LxDxH)</u>	<u>Heated</u>
60 Gallons	235	45x24x30 in	Yes
100 Gallons	296	48x30x34 in	Yes



PUMP SOLUTIONS





Features & Components Included

- Great performance and quiet operation
- Self priming
- Built In 6 Minute Timer
- Stainless steel motor shaft
- Polypropylene housing
- Reliable EPDM diaphragm
- Viton check valve
- Flow rate 6-9 GPM
- 115V 60Hz, .44 HP
- Operating pressure 1.6 bar (25PSI)

The Blue1 TD1 is a self-priming, diaphragm style pump designed for cost effective use with drums, totes and via a wall mount system. Engineered and constructed to meet the rigors of dispensing DEF from industrial containers, this pump's universal mounting bracket is designed for optimal versatility. The TD1 can be set up in minutes; combined with our High Flow Valve and Coupler system, it can systematically deliver pure DEF. Every TD1 will provide the customer with instant flow and filling rates above 6 GPM. This pump can be used in many different DEF applications and will provide excellent results. Whether dispensing from a drum or tote, the TD1 provides the end user with excellent flow of DEF at an affordable price. All pump systems come with a convenient nozzle hook and hose hanger.

You may also need:

High Flow Valve, 4 Cam, 275g Dip Tube

High Flow Valve, 4 Cam, 330g Dip Tube

High Flow 4 Cam Dispense Coupler w/90 Barb

Options



10 or 20 ft. hose



Flow Meter



Drum Mounting Kit





Features & Components Included

- Reliable performance and quiet operation
- Self priming
- Polypropylene housing
- Reliable EPDM diaphragm
- Viton check valve
- Flow rate 6-8 GPM
- 12 Volt, 1/3 HP

The Blue1 TD12V diaphragm pump is built for use in mobile DEF operational platforms. Either in the back of a truck bed or out in the field, the TD12V provides optimal flexibility. End users will love using this pump because it is self priming, has excellent performance and time tested reliability. Our universal mounting bracket allows for simple set up on the user's desired container style or size. Once the bracket is securely mounted, connect the 12 volt external power source and you are ready to pump DEF. The Blue1 TD12V is perfect for all your off-road needs.

You may also need:

High Flow Valve, 4 Cam, 275g Dip Tube

High Flow Valve, 4 Cam, 330g Dip Tube

High Flow 4 Cam Dispense Coupler w/90 Barb

Options



10 or 20 ft. hose



Flow Meter





Features & Components Included

- Reliable performance
- Quiet operation
- Unique Micro Switch Allows On Demand Dispensing
- EPDM Diaphragm
- UL / ULc Certified
- 115V, 60 Hz
- Flow rate 5-7 GPM
- 6 ft Cord with 3 prong plug

Blue1's TD10 is a reliable, workhorse design which provides the complete out of the box experience for the drum and tote user. Designed to provide the end-user with a complete closed system DEF dispensing experience, the TD10 is a simple and cost effective self-priming DEF pump solution. Take it out of the box and plug it in, connect it to the drum or tote and you are ready for DEF dispensing.

You may also need:

High Flow Valve, 4 Cam, 275g Dip Tube

High Flow Valve, 4 Cam, 330g Dip Tube

High Flow 4 Cam Dispense Coupler w/90 Barb

Options



10 or 20 ft. hose



Flow Meter



TD10-12V



Features & Components Included

- CE Certified
- Unique Micro Switch allows On Demand Pumping
- EPDM Diaphragm
- Flowrate 5-7 GPM
- 12V
- 8 ft cord with Alligator Clips

Blue1's TD10-12V is a powerful diaphragm pump built to stand up to the demands of DEF dispensing. The TD10-12V's built in micro switch offers on demand pumping and is ready to perform whenever needed. The CE certification assures compliance with electrical safety standards.

You may also need:

High Flow Valve, 4 Cam, 275g Dip Tube

High Flow Valve, 4 Cam, 330g Dip Tube

High Flow 4 Cam Dispense Coupler w/90 Barb

Options



10 or 20 ft. hose



Flow Meter





Features & Components Included

- High performance and quiet operation
- Stainless steel motor shaft
- Stainless steel housing
- Exclusive design
- Flow rate 7-10 GPM
- 115V 60Hz, 3/4 HP
- High operating pressure (8 bar max)

The Blue1 TC1 centrifugal pump is designed to handle the stringency of the DEF industry while providing economical, on-demand pumping for the end user. This mid-range, high performance pump is purpose built for use with totes and tanks. Every TC1 comes with a SureStop™ pressure switch that automatically senses inactivity with the pump. This 3/4 HP pump offers excellent lift and carry characteristics and will work with a wide variety of DEF applications.

Easy to install and operate, the TC1 is truly a powerful and robust system that is priced to provide exceptional value. It is not only economical and reliable, but a workhorse built for ultimate reliability.

You may also need:

High Flow Valve, 4 Cam, 275g Dip Tube

High Flow Valve, 4 Cam, 330g Dip Tube

High Flow 4 Cam Dispense Coupler w/90 Barb

Options



10 or 20 ft. hose

Flow Meter @ Nozzle





Features & Components Included

- Piston Hand Pump
- Telescopic Suction Down Tube
- 10 ft. Dispense Hose
- Plastic Nozzle
- 2" NPT Drum Thread
- Polypropylene Body
- Flow Rate to 5 GPM
- Easy to Install
- Fits 55 Gallon Drum

The Blue1 TM1 is the perfect and affordable solution for low volume shops or as an emergency backup when an electric pump isn't an option.

You may also need:

High Flow Valve, 4 Cam, 55g Dip Tube

HF 4 Cam Fill Coupler, EPDM Gaskets, NRX w/fitting for TM1

4 Pin Valve Install Tool

Tamper Evident Wire Seal

Replacement Telescopic Down Tube for TM1





Features & Components Included

- Self Priming Submersible Pump
 - 10 ft. Dispense Hose
 - ISO 22241 Compliant
 - DEF Flow Rates to 5 GPM
 - Integrated Nozzle Holder
 - Built-in Nozzle Swivels for Ergonomic Use
 - Built -in 15 min Timer (AC/DC Model only)
 - Universal Fit for Standard 55 Gal Drums
 - Available with AC Adapter and 12V Clips or Rechargeable Battery
- (Drum not included)*

The Blue1 TED1 is the perfect and affordable solution for low volume shops and a better alternative to a manual hand pump when pumping from drums.



AC/DC Model Equipped with Built-In Timer





VALVES & COUPLERS

VALVES & COUPLERS



High Flow Dispense Coupler

- Design improvements allow for flow rates up to 23.5 gpm
- Heavy-duty handle with an audible click locking feature
- 4 Cam locking mechanism
- Integrated $\frac{3}{4}$ " x 90 degree swivel barb connection



High Flow Fill Coupler

- Design improvements allow for flow rates up to 40 gpm
- Significant cost savings when compared to commonly used stainless steel fill heads
- 4 Cam locking mechanism
- BSPP swivel outlet can accommodate adapters from $\frac{3}{4}$ " to 2"



High Flow Valve

- Optimized for performance that meets and exceeds DEF market demands
- Up to 20% better flow rate than the competition
- 4 Cam locking mechanism
- Secure and tamper evident ready
- 24 per case
- 3 Sizes (330g, 275g, 55g)
- Simple as Click. Pump. Go.

TOTE MANIFOLD



(Totes and Pump not included.)

The Blue1 Tote Manifold System) provides the end-user with a simple to install solution that links together totes in to a single pump suction point. No further need to move your pump around from tote to tote. The prepackaged kit comes assembled and ready to go after a few easy steps for installation. The manifold features a dual opening lid design with standardized 4-cam valves preinstalled for quick and easy refilling of each tote. The two hole cap replaces the current lid on your tote and is designed to incorporate your existing valve and coupler. Connect the manifold to the couplers and the pump and you're ready to dispense!





PARTS & ACCESSORIES



Carbon Steel Nozzle Holster
(Nozzle not included)



Hose Reel (available in 25 ft or 50 ft)
(Nozzle not included)



Hose Reel Tote Bracket
(Hose reel, nozzle and tote not included.)



Auto Nozzle w/3/4" barbed swivel, nozzle hook
Available without swivel and hook.



Plastic Nozzle w/locking pin, 3/4" barbed connection



Misfill Prevention Nozzle w/Collar



Magnetic SS Nozzle w/nozzle hook, 3/4"swivel
Available without swivel and hook

Magnetic Collar Misfill Prevention Device (MFPD)



3/4" DEF Dispense Hose – designed specifically for dispensing DEF.



Titan 3/4' DEF Suction Hose – reinforced with helix wire to prevent collapsing.
Like our dispense hose, it is designed for DEF applications.

Looking for a certain size? We can cut to specified lengths!
Call us today!



Turbine Flow Meter



Flow Meter @ Nozzle
(nozzle not included)



IBC 6" Cap, 2" Butress
IBC 6" Cap, (2) 2" Butress *(not shown)*



SS Valve Install Tool



Plastic Valve Install Tool
(min order qty 5)



Tamper Evident Seal
(min order qty 20)



Dust Cap
(min order qty 20)



Check Valve Assembly



Gravity Feed System, DEF Hose, Manual Nozzle
Available with 10 ft or 20 ft of dispense hose.
(Totes and hose hanger not included.)



Stainless Steel Overfill Prevention Valve



Filter



Pulse Meter



Poly Enclosure w/Alarm



Hose Assembly w/ SS Ball Valves



Filter



Veeder Root Isotrol Box



SS Emco Wheaton 2" Dry Break Male Coupler



Level Gauge (Ria45)



Atmospheric Vent used in Platinums



Forklift Pockets



Submersible DEF Pump w/Float Switch
½ HP or 1 HP available



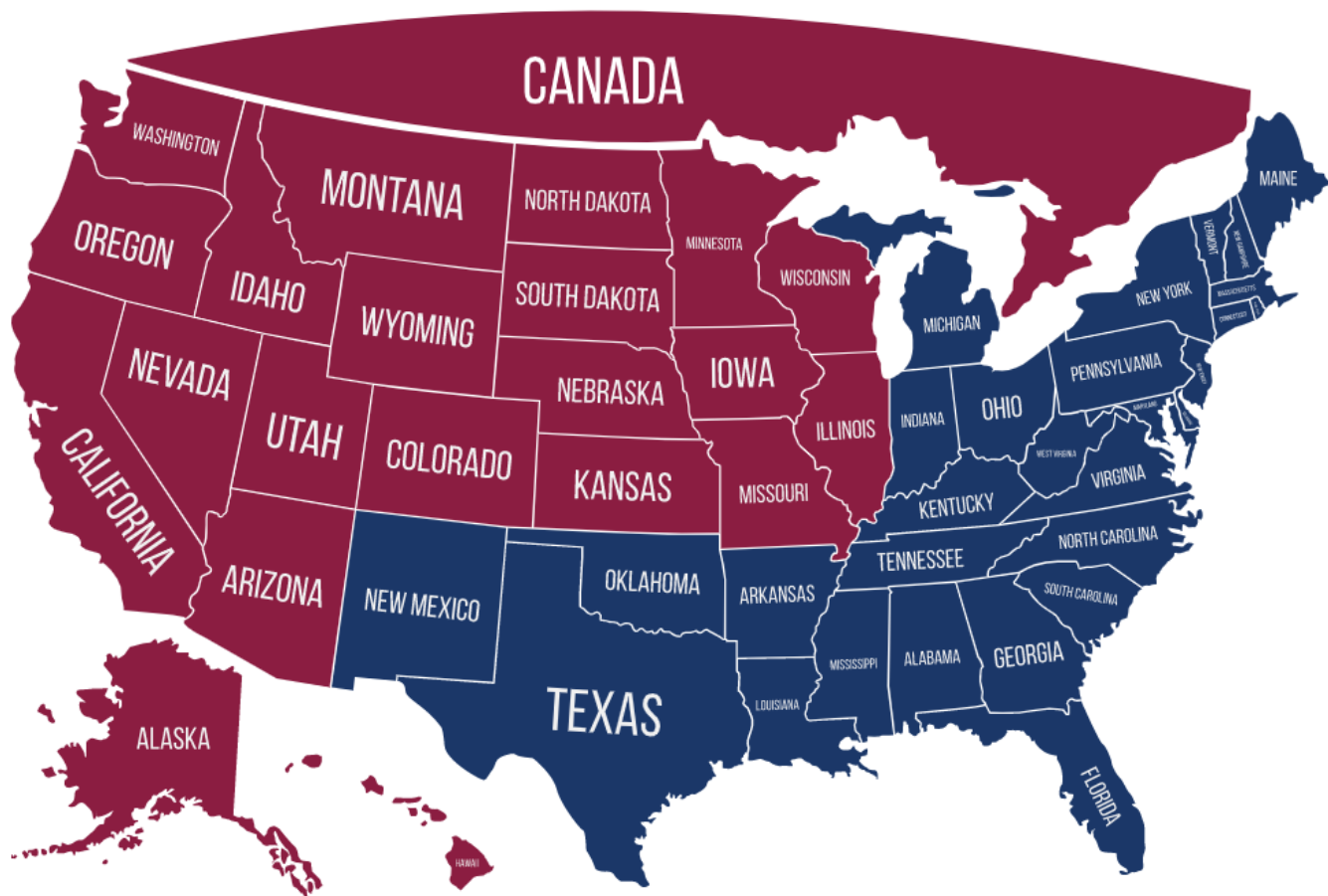
Anti-Kink Spring for Hose
(min order qty 5)



Stainless Steel Hose Clamps
(min order qty 50)



SS Swivel for Auto Nozzle
(min order qty 5)



Western Region & Canada

Tom Nuckolls
President
(864) 385-7035

TNUCKOLLS@BLUE1ENERGY.COM

Eastern Region

Greer Huguley
Regional Sales Manager
(864) 385-7038

GHUGULEY@BLUE1ENERGY.COM

International

Kevin Jensen
Global Business
Development
(239) 308-7070

KJENSEN@BLUE1ENERGY.COM

National Government Sales

Adam Polak
770-688-1958
Cell 701-401-4588

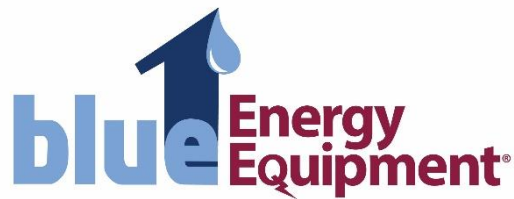
APOLAK@BLUE1ENERGY.COM

For Customer Service, Parts, and Technical Support, contact

Ashley Blevins – Customer Service Manager
(864) 385-7032

ABLEVINS@BLUE1ENERGY.COM

www.blue1energyequipment.com



3040 WHITE HORSE RD | GREENVILLE SC 29611
8 6 4 . 3 8 5 . 7 0 3 0

1650 HORIZON PARKWAY STE 450 | BUFORD GA 30518
8 6 6 . 9 9 2 . 5 8 3 1

WWW.BLUE1ENERGYEQUIPMENT.COM